

## AP 10 - Spatiu Birou 05

### SUPRAFETE UTILE:

1. birouri = 16.74 m<sup>2</sup>
2. birouri = 12.06 m<sup>2</sup>
3. bucatarie+loc de luat masa = 7.48 m<sup>2</sup>
4. baie = 5.35 m<sup>2</sup>

**TOTAL Su = 41.63 m<sup>2</sup>**

a. logie = 4.05 m<sup>2</sup>

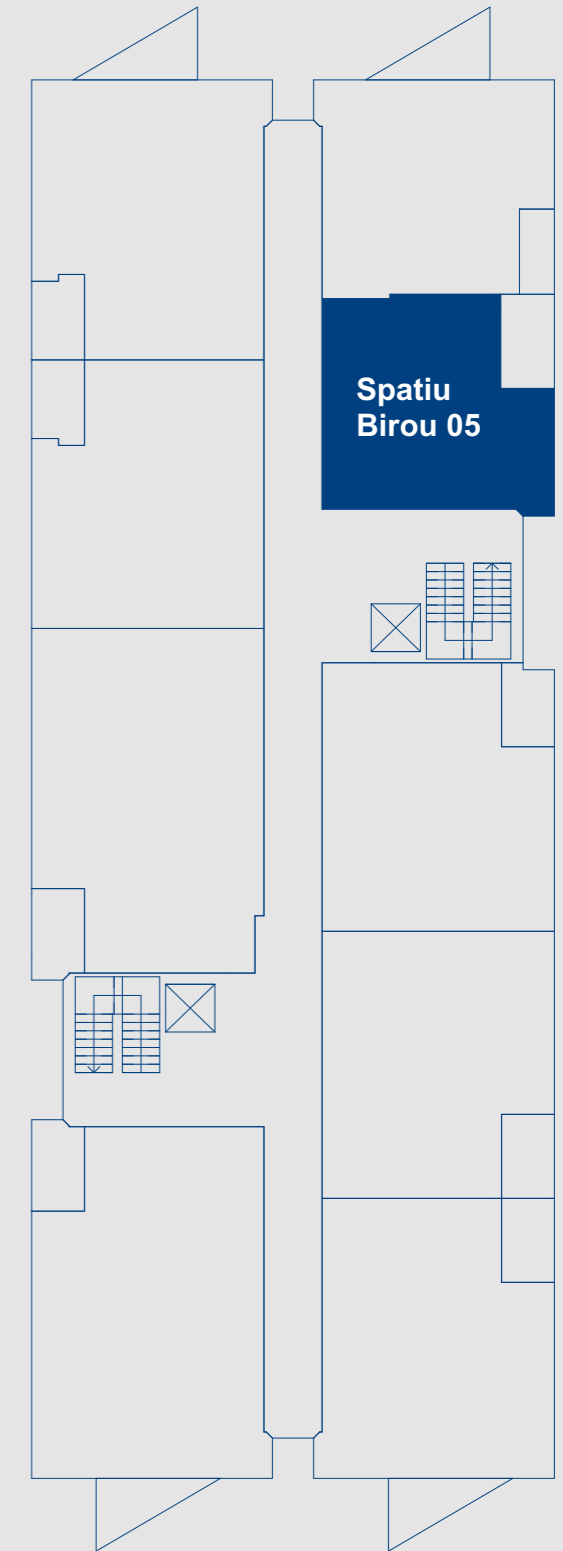
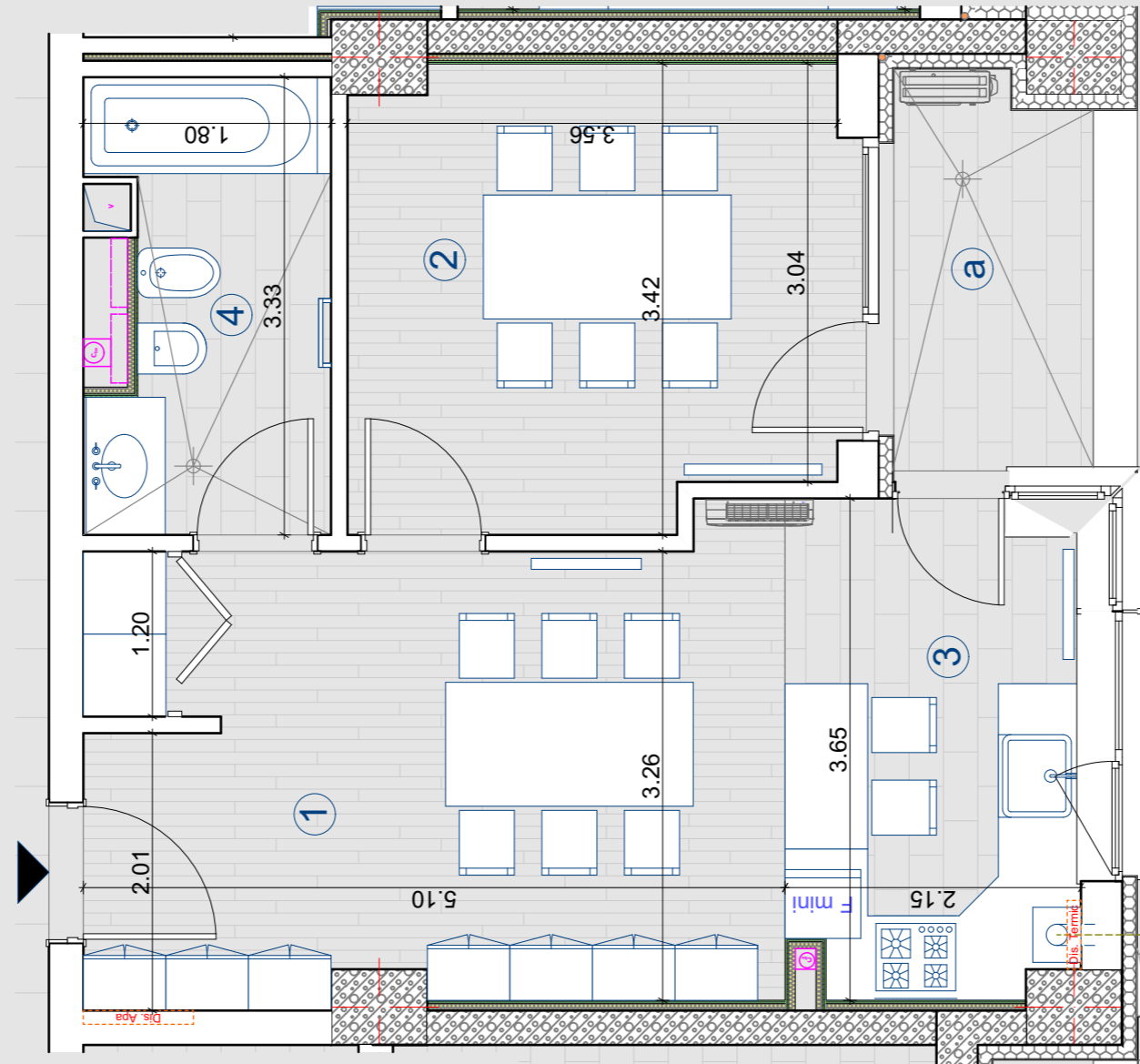
**TOTAL Su = 45.68 m<sup>2</sup>**  
(inclusiv logie)

### SUPRAFETE CONSTRUITE:

**TOTAL Sc interior = 50.30 m<sup>2</sup>**

TOTAL Sc logie = 5.68 m<sup>2</sup>

**TOTAL Sc (incl. logie) = 55.98 m<sup>2</sup>**



ETAJ 1



atelier de arhitectura  
horus

SC 1:50

